

Accessing Unix from Windows

Xming

Xming provides graphical access to Unix from the Windows desktop. Use your usual UWE username and password to log into Unix.

Unix Home Folders

You can access your Unix home folder from any UWE computer. Go to **My Computer** and there will be a **L:\ Drive**, which is your Unix home folder.

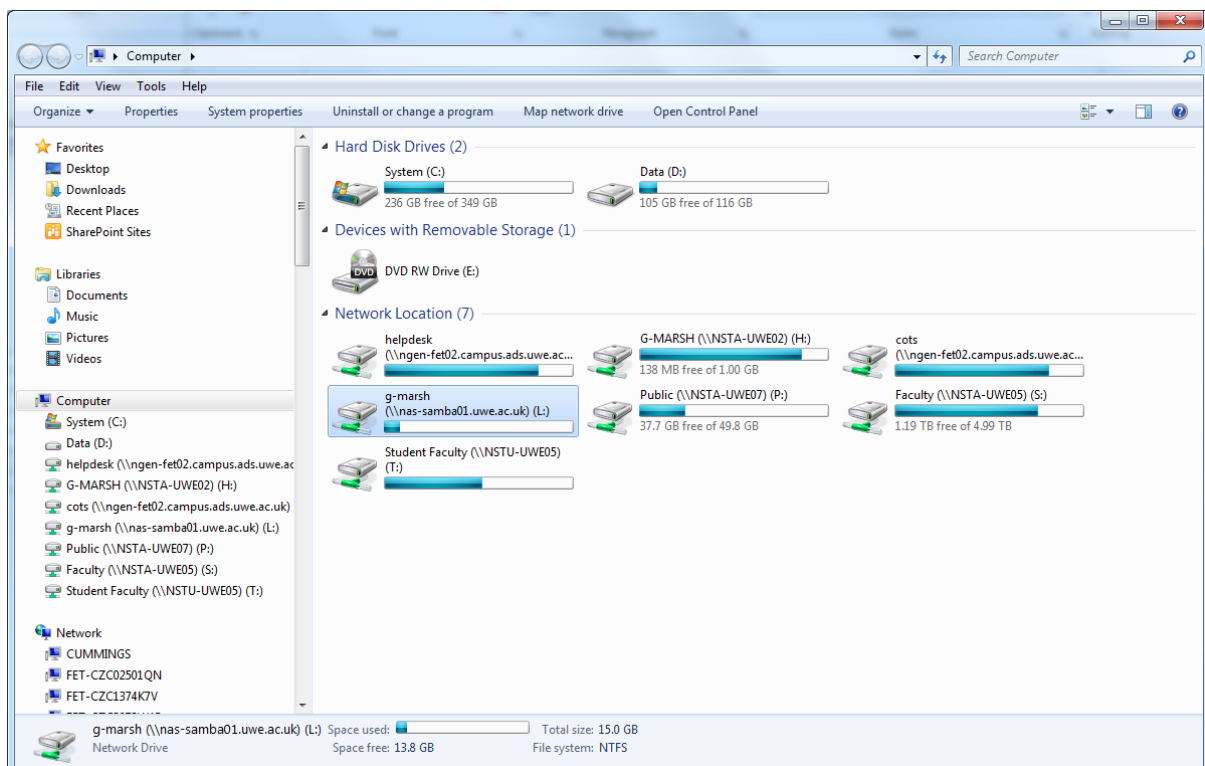


Figure 1

Using SSH to connect to Unix securely

Using an SSH client, a program called **PuTTY**, you can connect to a Unix based system securely. SSH (Secure Shell) is a replacement for telnet, which will give you a terminal connection to Unix. You will need to know some Unix commands to use this type of connection. Please see the Brief Introduction to Linux helpsheet.

Using PuTTY

1. Under **Host Name** on the initial screen (see figure 2), type the name of the Unix server you want to connect to, for example the student server is **milly.cems.uwe.ac.uk**.
2. Leave the other settings as the default values.
3. Click **Open**.

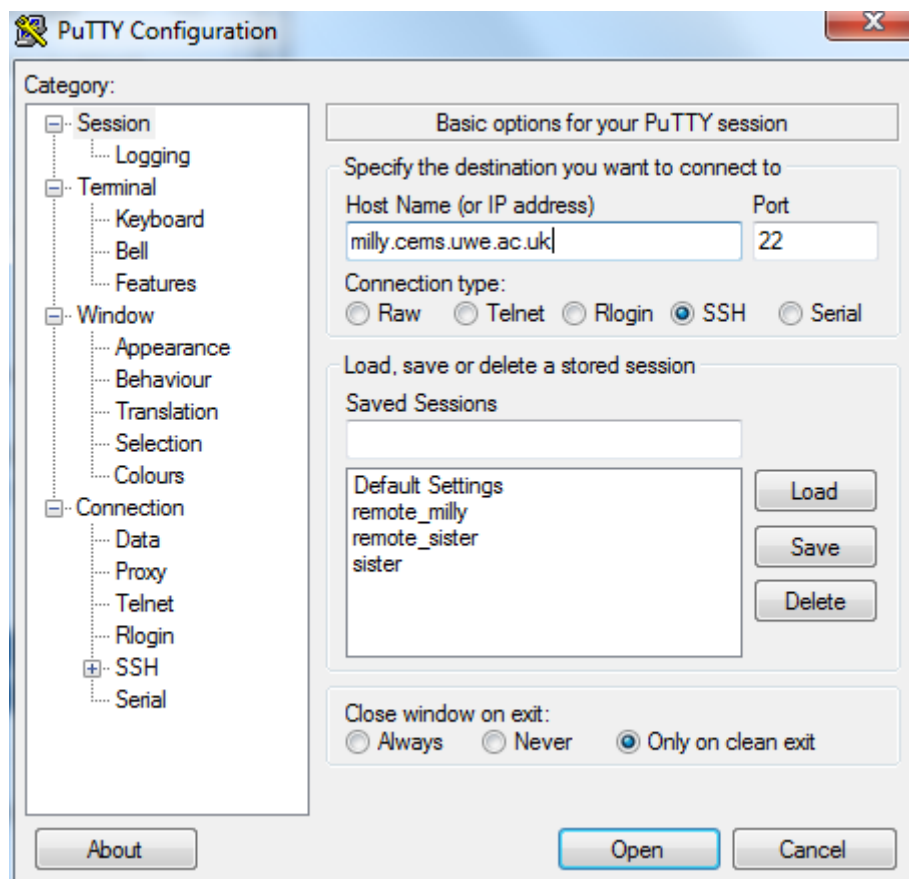


Figure 2

4. The first time you log in you will probably receive the following message:



Figure 3

Click **Yes** to proceed.

5. You will then be prompted for your username and password.

6. You will then be logged onto the Unix system.

Securely Copying Files Between Windows And Unix

You can securely copy files between Unix and Windows using SCP/SFTP (this is a secure replacement to FTP). It can be used through the program **WinSCP**.

Using WinSCP

1. On the initial screen, under **Host Name** type the name of the Unix server you want to connect to, for example the student server is **milly.cems.uwe.ac.uk** (see figure 4 below).

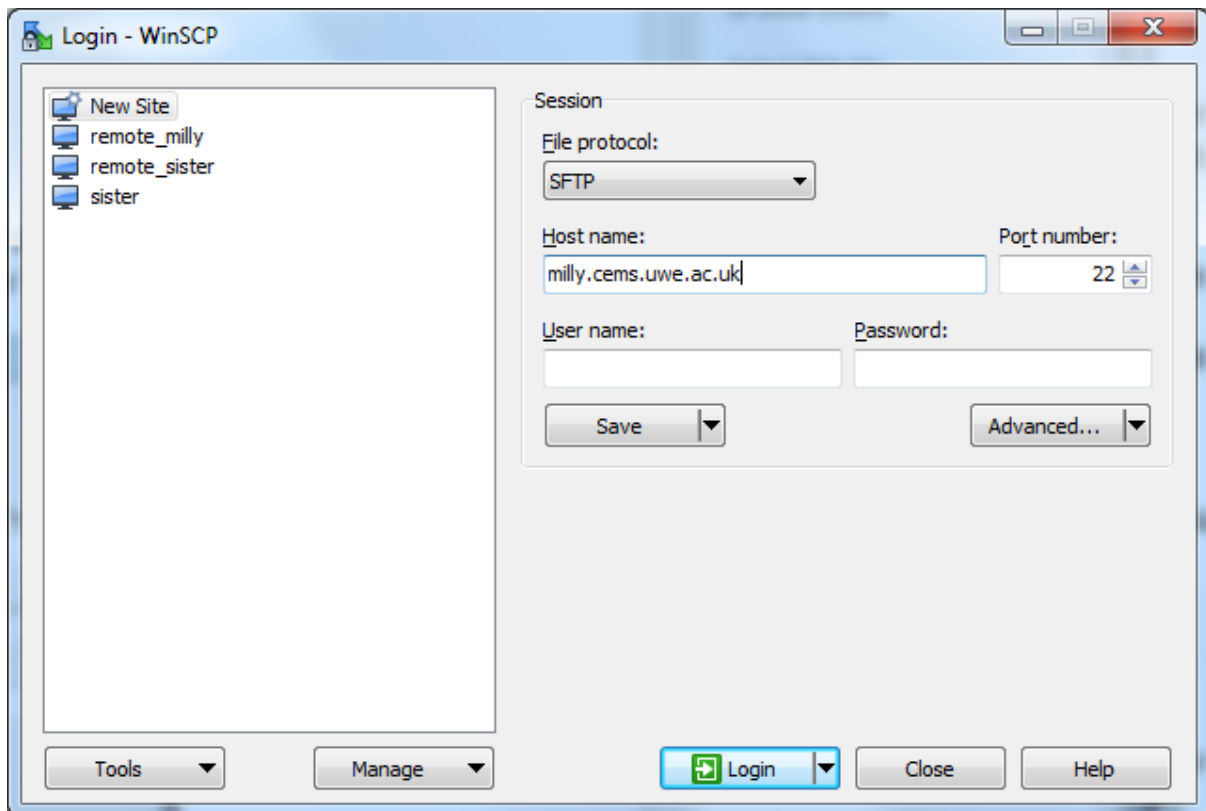


Figure 4

2. Enter your username and password into the appropriate fields.
3. Leave the other settings as their default values.
4. Click **Login**.

5. The first time you log in you will probably receive the following message:

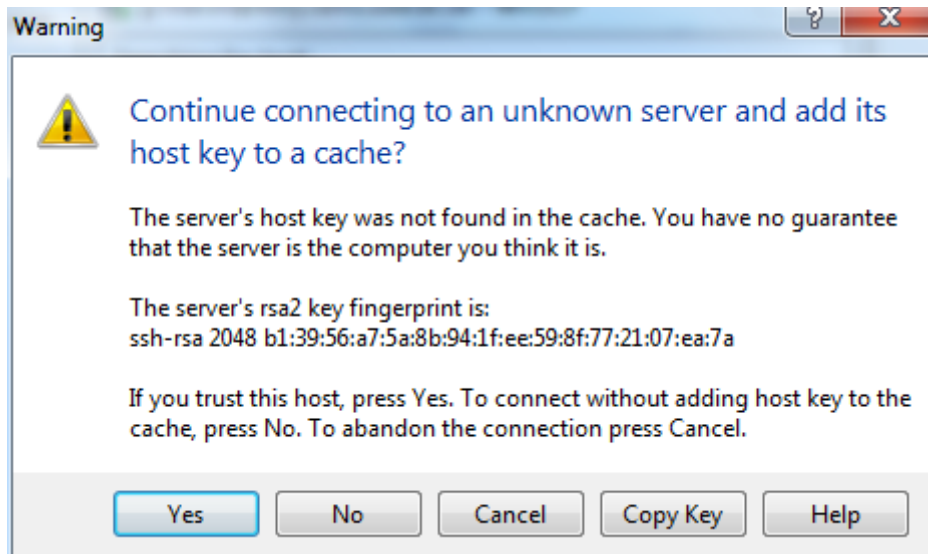


Figure 5

6. Click **Yes** to proceed.

7. The main **WinSCP** window will be displayed; this is split into two parts.

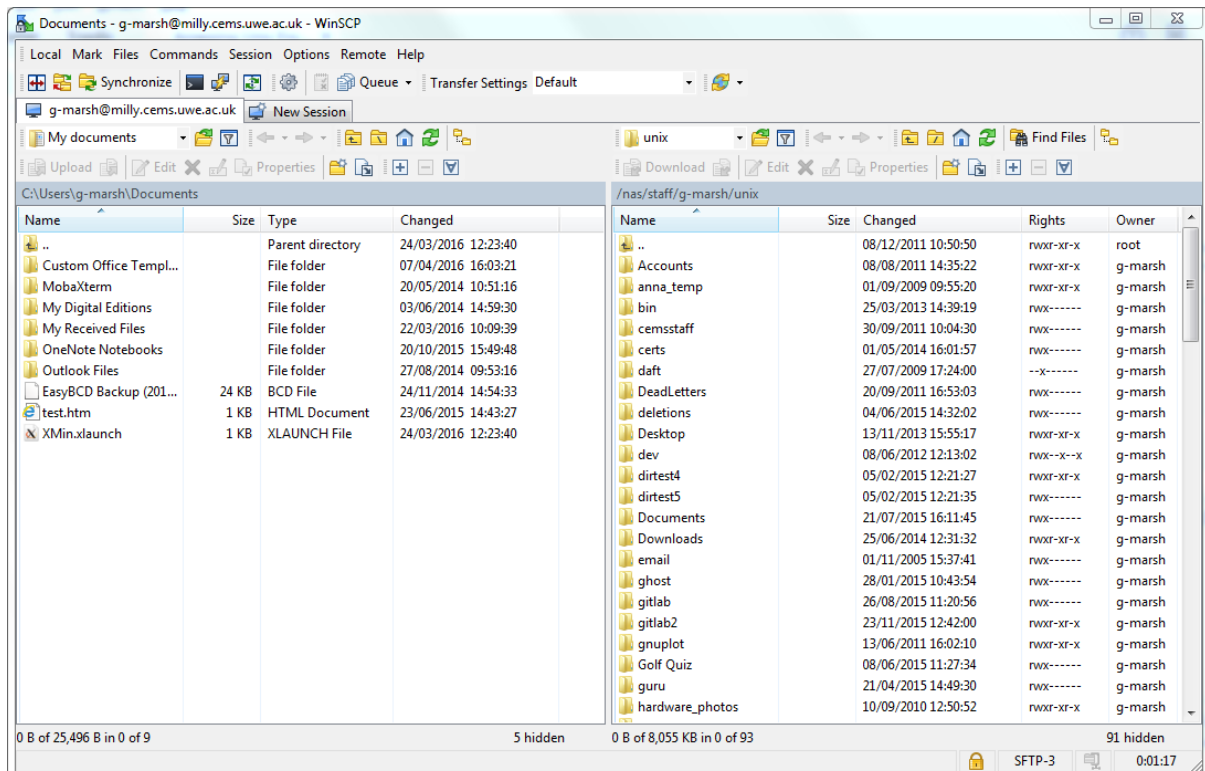


Figure 6

8. The left hand side is the local machine and the right is the remote machine, which in this example is the user's home folder on **milly**.

9. Files can be transferred by dragging and dropping between the two panes, or using the tool bar.